



MERIT
2006 FAIR

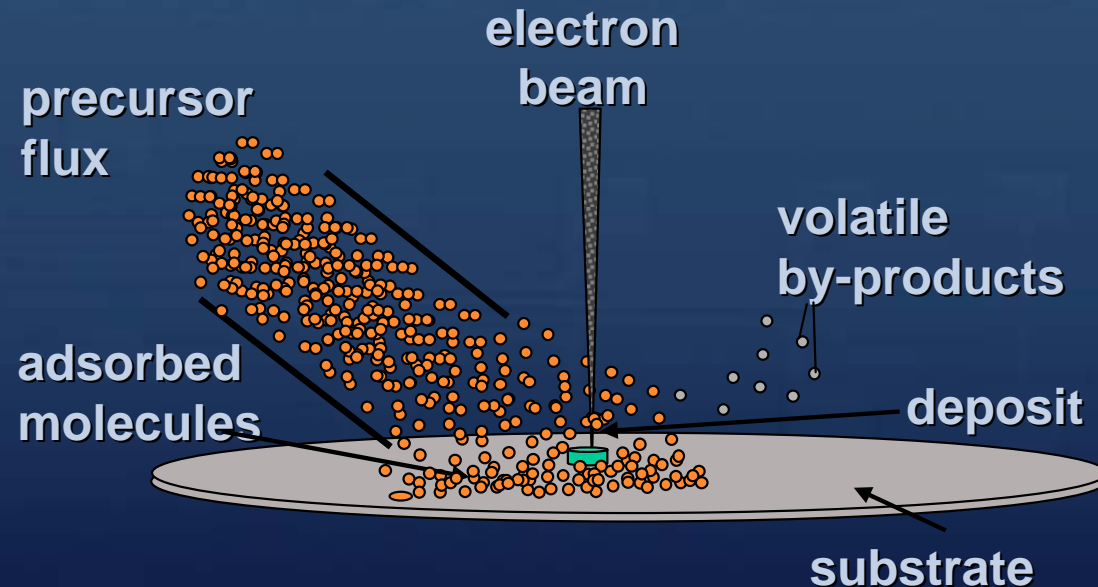
Electron Beam Induced Deposition of Platinum Contacts

Daniel Chang, Matthew Ervin, John Barry, Barbara Nichols,
John Melngailis, Alma Wickenden



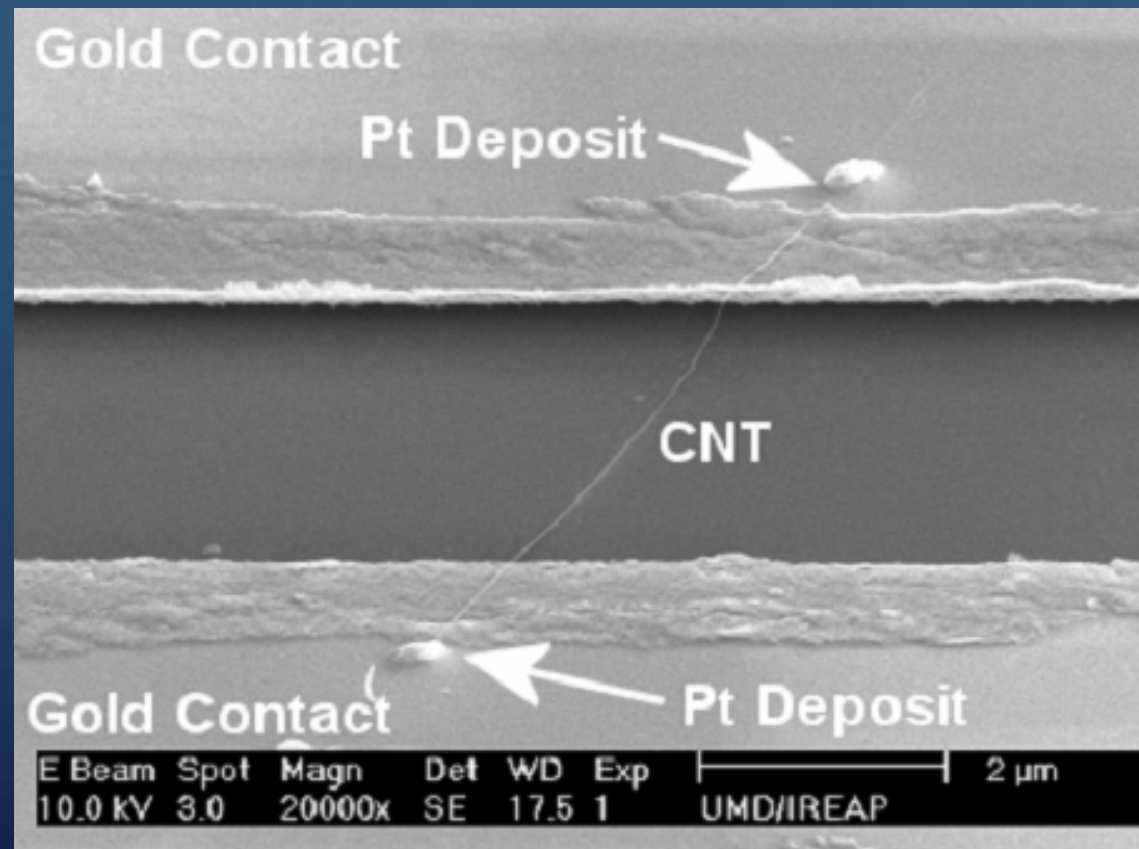
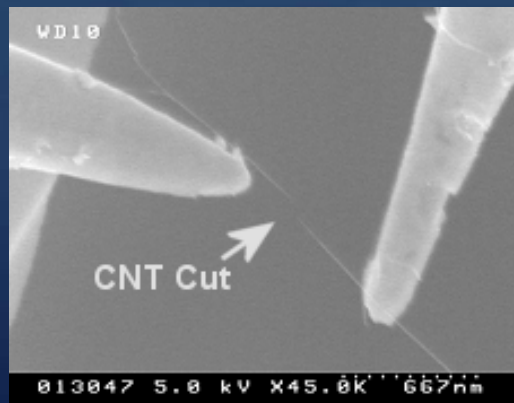
Electron Beam Induced Deposition

- Why study EBID?
- How does EBID work?
- Novel $\text{Pt}(\text{PF}_3)_4$ precursor gas.



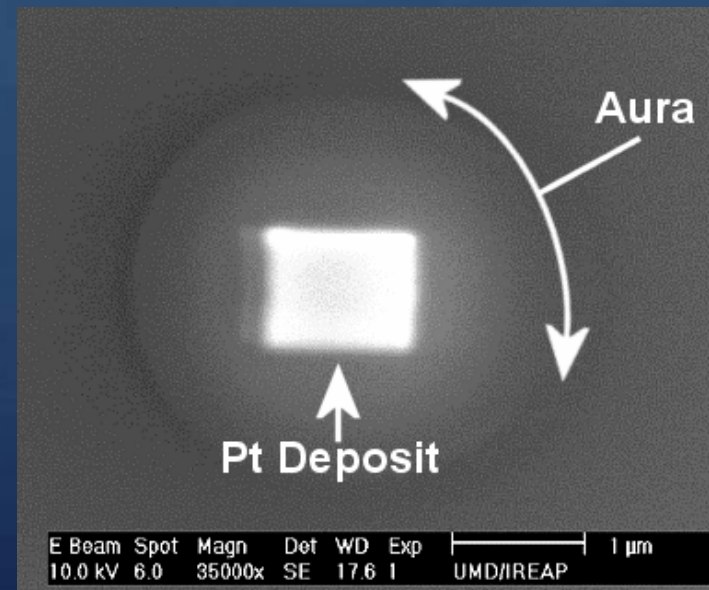
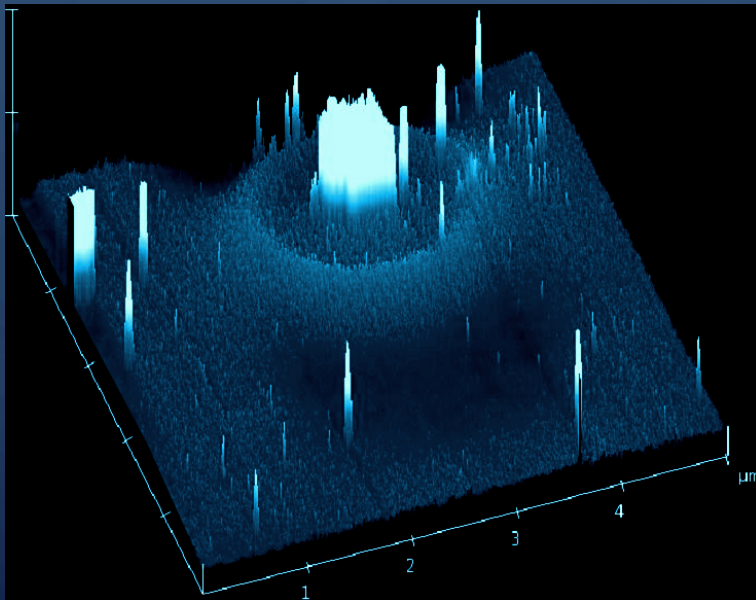
Integrative Capabilities

- Carbon Nanotube Device.



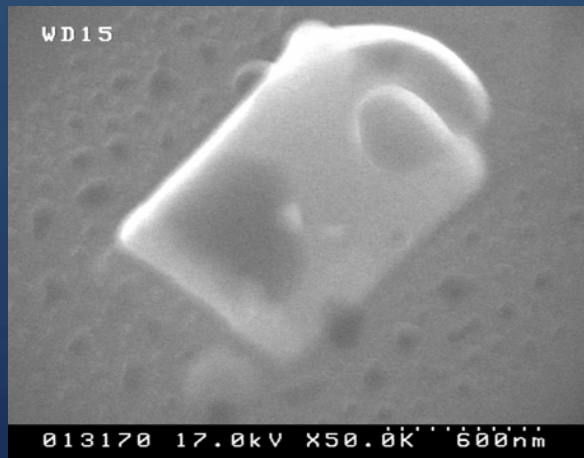
Determine Aura Mechanism

- Undesired Pt auras form around the deposit.
- Why?

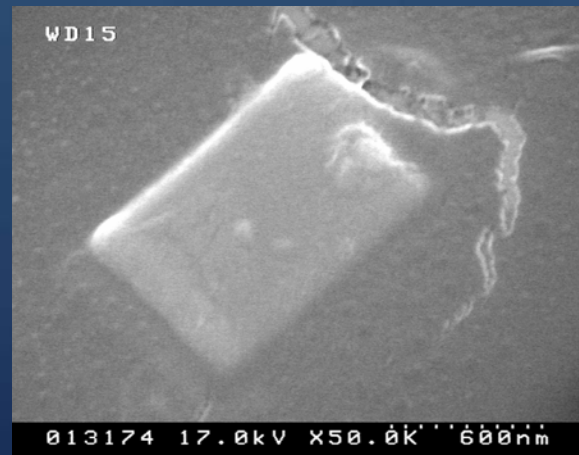


Anneal Effects

- Elemental composition.
- Physical morphology.
- Impact on conductivity.



Pre-Anneal



100° C Anneal



200° C Anneal

Want More?

- Please see me at my poster!
 - Thank you!